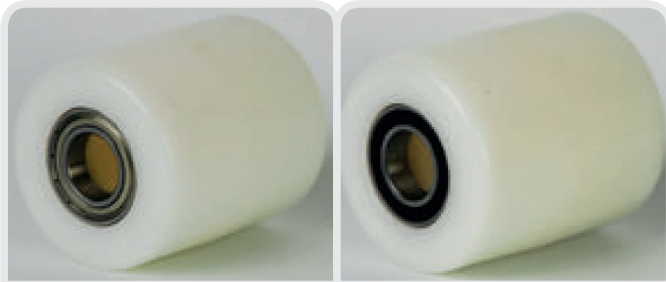


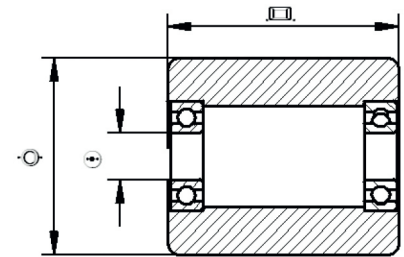
Flurförderfahrzeuge • Material handling

Polyamid hubwagenrollen • Polyamide palletrollers







HUBWAGENROLLEN MIT KUGELLAGER • PALLETROLLERS WITH BEARINGS



Hubstaplerrolle in hochwertigem Polyamid PA6 (extra solide Ausführung): Farbe weiß, hohe Abriebfestigkeit, stoß- und schlagfest - mit Präzisionskugellagern.



Palletroller in high quality polyamide PA6 (extra solid version): colour white, high wear resistance, shock- and impact resistant: on precision ball bearings.

					
85	65	20	63	650	PL TK 085 065 020
85	65	25	63	650	PL TK 085 065 025
85	70	20	68	700	PL TK 085 070 020
85	70	25	68	700	PL TK 085 070 025
85	75	20	73	750	PL TK 085 075 020
85	75	25	73	750	PL TK 085 075 025
85	80	20	78	800	PL TK 085 080 020
85	80	25	78	800	PL TK 085 080 025
85	85	20	83	850	PL TK 085 085 020
85	85	25	83	850	PL TK 085 085 025
85	90	20	88	900	PL TK 085 090 020
85	90	25	88	900	PL TK 085 090 025
85	95	20	93	950	PL TK 085 095 020
85	95	25	93	950	PL TK 085 095 025
85	100	20	98	1.000	PL TK 085 100 020 B
85	100	25	98	1.000	PL TK 085 100 025
85	110	20	108	1.100	PL TK 085 110 020
85	110	25	108	1.100	PL TK 085 110 025

- Hubstaplerrolle in hochwertigem Polyamid PA6 mit hervorragenden Rolleigenschaften und minimalem Rollwiderstand.
- Temperaturbereich: -30°C bis +80°C.
- Ideal auf glattem Untergrund.
- Extra hohe Tragfähigkeit.
- Die Präzisionskugellager garantieren optimalen Fahrkomfort.
- Geeignet für schweren Transport.
- Optionen: kundenspezifische Lösungen, alternative Lagersitze, mehrere Lagertypen (2RS, ZV, Edelstahl, ...), verschiedene Abdichtungssysteme (siehe weiter).

- Palletroller in high quality polyamide PA6 with excellent rolling properties and minimal rolling resistance.
- Temperature range: -30°C to +80°C.
- Ideal on flat floors.
- Extra high load capacity.
- The precision ball bearings guarantee optimal ride comfort.
- Suitable for heavy transport.
- Options: customised solutions, alternative bearing seats, various bearing types (2RS, ZV, rustproof, ...), several sealing systems (see further).